



LQS C650 MAIN TANK SIGHT GAUGE INSTALLATION GUIDE

DOCUMENT NO.	MAN0043
REVISION	A
REVISION DATE	4/05/2023
APPROVED BY	

Contents

1. IMPORTANT INFORMATION	3
1.1 About this Manual.....	3
2. SPECIFICATIONS	4
2.1 About the System.....	4
2.2 System Components	5
3. INSTALLATION.....	4
3.1 Prepare & Position Pre-Assembled Gauge	6
3.2 Cut Tank Hole & Install Tank Plumbing.....	10

Disclaimer

Information in this document is believed to be accurate and reliable. However, the manufacturer does not give any representations or warranties, expressed or implied, as to the accuracy or completeness of such information and shall have no liability for the consequences of use of such information. The manufacturer reserves the right to make changes to information published in this document, including without limitation specifications and product descriptions, at any time and without notice. This document supersedes and replaces all information supplied prior to the publication hereof. The manufacturer's products are not designed, authorized, or warranted to be suitable for use in applications where failure or malfunction can reasonably be expected to result in personal injury, death or severe property or environmental damage, or disruption to operation of a business. The manufacturer accepts no liability for inclusion and/or use of its products in such equipment or applications and therefore such inclusion and/or use is for the customer's own risk.

PLB Australasia Pty Ltd trading as Liquid Systems (SA) - ph: +61 8 8357 4437
Contact information is available on the company website at www.liquidsystems.com.au.
Originally published May 2023.

1. IMPORTANT INFORMATION

1.1 About this Manual

This document provides instructions for installing the LQS120 C650 Main Tank Sight Gauge to a John Deere C650 Air Cart.

Safety and Damage Warnings

WARNING, CAUTION and NOTE symbols are used throughout this manual to stress the importance of personal safety, potential machinery damage and useful operating information.



WARNING: Indicates the strong possibility of severe personal injury or damage to machinery if instructions are not followed.



CAUTION: Highlights hazards, unsafe or unwise practices which could cause personal injury, property damage, damage to your machinery or loss of potential crop yield if instructions are not followed



NOTE: Refers to important and useful information which should not be overlooked.

Important Safety Instructions



WARNING: Always wear protective gloves, eyewear, footwear and clothing when installing and commissioning the system.

To avoid injury, use mechanical assistance wherever necessary when lifting heavy items.

Use appropriate safety equipment when working at heights.

2. SPECIFICATIONS

2.1 About the System

The LQS C650 Main Tank Sight Gauge includes components to add liquid sight gauge to a John Deere C650 Cart with liquid centre tank. This includes:

- LQS C650 Main tank sight gauge assembly
- Chassis mounting kit
- Tank plumbing kit

LQS C650 Main Tank Sight Gauge Installation Guide

2.2 System Components

REVISIONS			
REV.	DESCRIPTION	DATE	DRN BY
A	Drawing release	21/02/2023	DH
B	Item 9 added, items 8,11,15 updated	24/03/2023	DH
C	Items 6 & 7 updated	28/03/2023	DH
D	Item 27 updated - Item 31-32 added	21/04/2023	HM
E	New Item 30 - Item 27 QTY updated	26/04/2023	HM

ITEM NO.	DESCRIPTION	PART NUMBER	QTY.
1	C650 MAIN TANK SIGHT GAUGE FASCIA	L06035	1
2	C650 MT SIGHT GAUGE BOTTOM REAR BRACKET	L06036	1
3	C650 MT SIGHT GAUGE BOTTOM FRONT BRACKET	L06037	1
4	C650 MT SIGHT GAUGE TOP REAR BRACKET	L06038	1
5	C650 MT SIGHT GAUGE TOP FRONT BRACKET	L06039	1
6	C650 MT SIGHT GAUGE TOP PLATE	L06040	1
7	C650 MT SIGHT GAUGE BOTTOM PLATE	L06041	1
8	M8 NUTSERT	CF-5145-0855	8
9	M8 NUTSERT LOW PROFILE	CF-0946805821	8
10	M6 S/S DLS NUTSERT	CF-DLS6104.2	4
11	M8X130 SOCKET HEAD CAP SCREW	CF-8X130MG316SHCS	8
12	M8X20 316 SS SET SCREW	CF-8X20MG316SS	16
13	M8 316 SS FLAT WASHER	CF-8MG316W	24
14	M8 316 SS SPRING WASHER	CF-8MG316SW	24
15	M8 304 S/S HEX STD NUT	CF-8MG304N	8
16	M6X70 316 S/S HEX BOLT	CF-6X70MG316B	4
17	1.25" PIPE CLAMP SHELL PP	BL-HRL5KP42PP	2
18	1.25" CLAMP TOP PLATE	L03034	2
19	C650 MT SIGHT GAUGE TUBE	L06042	1
20	C650 MT SIGHT GAUGE BREATHER SOCKET	L06043	1
21	1.25" POLY TEE	BJ-TEE125	1
22	1.25" PLUG	BJ-PLUG125	2
23	1 1/4" MALE THRD X 1" HB	BJ-HB125-100	1
24	1" 90DEG HOSETAIL	BJ-HB100-90	1
25	1" TANK FITTING EPDM SEAL	BJ-TF100	1
26	BARFEL 25MM HOSE 300 PSI	BL-201327	1.6m
27	S/S T-BOLT CLAMP 32-35MM	TD-TTBS-32-35	2
28	FILL FLOAT	C650-FG-FLOAT	1
29	DECAL (NOT SHOWN)	LQ-DecalLQSSightGauge	1
30	TEFLON THREAD TAPE (NOT SHOWN)	GU-HA1210	1
32	1" SINGLE UNION BALL VALVE	BJ-UV100FP	1
33	1" SHORT NIPPLE	BJ-NIP100-SH	1

© COPYRIGHT - ALL RIGHTS TO THIS DRAWING REMAIN THE PROPERTY OF LIQUID SYSTEMS (SA)			
DESCRIPTION:	C650-FILL GAUGE ASSEMBLY		
MATERIAL:	NOT SPECIFIED		
COLOUR:	N/A		
FINISH:	N/A		
DATE:	26/04/2023		
DRAWN BY:	HM		
SHEET:	1 of 1		
SCALE:	1:12		
DIMENSIONS IN MILLIMETERS UNLESS OTHERWISE STATED	DO NOT SCALE DRAWING	A3	
GENERAL TOLERANCES:	0 DECIMAL (0) ±0.5 2 DECIMAL (0.00) ±0.1 1 DECIMAL (0.0) ±0.2 ANGLE (0.00) ±0.2	DWG NO:	LL06021 REVISION: E

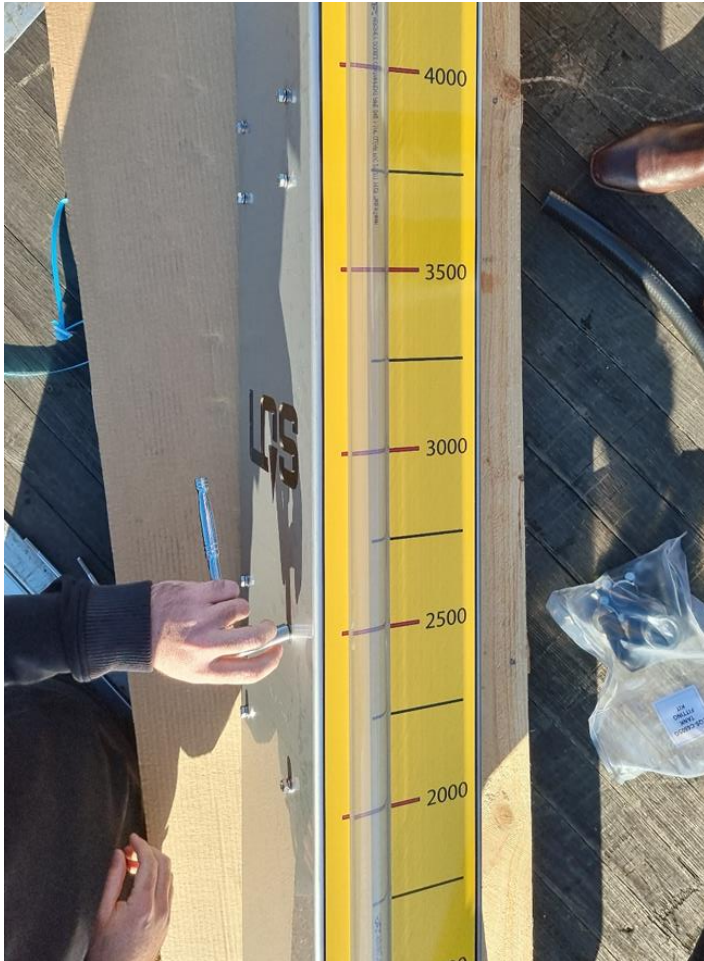
LQS C650 Main Tank Sight Gauge Installation Guide

- Remove the sight gauge assembly from the packaging and remove the 4 outer bolts on the clamp mounts.
- Loosen the 4 inner bolts on the clamp mounts but do not remove completely.



LQS C650 Main Tank Sight Gauge Installation Guide

- Loosen the clamp to fascia bolts to allow the clamps to expand over the air cart frame.



- Stand the assembly upright and move into position.

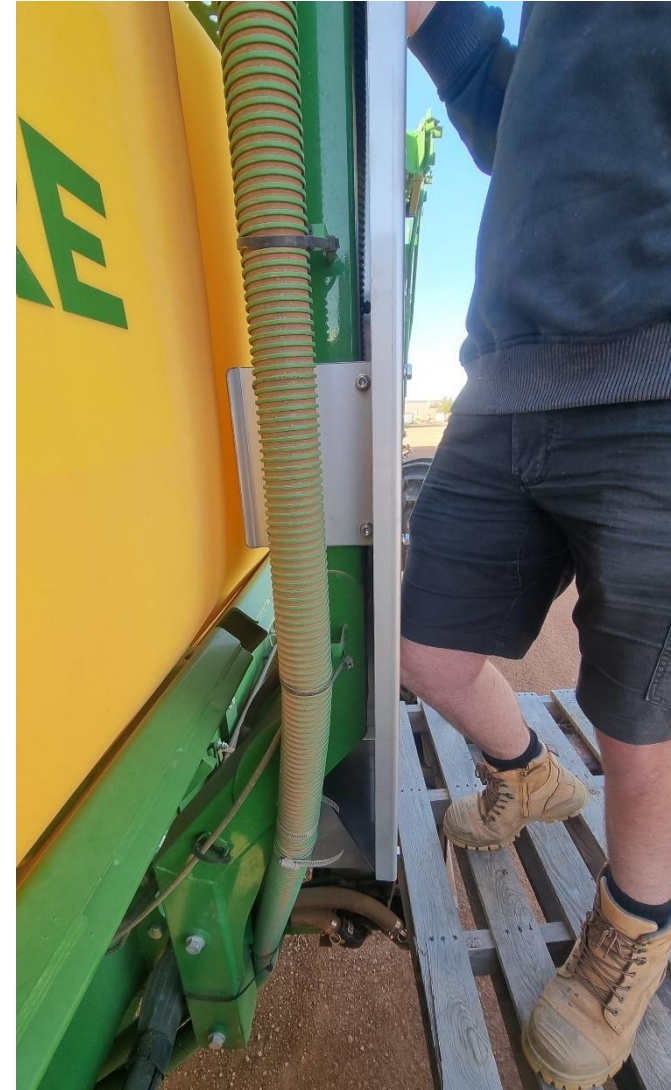


LQS C650 Main Tank Sight Gauge Installation Guide

- Slide the clamps over the frame with the top clamp resting on the top of the existing hose tab on frame.



Top clamp mount to slide between upper hose tab and frame plate.



LQS C650 Main Tank Sight Gauge Installation Guide

- Push the assembly firmly against the frame, reinsert the removed through bolts and tighten all 4 bolts of each clamp mount until firm.



- Tighten the clamps to fascia bolts.



3.2 Cut Tank Hole & Install Tank Plumbing

- Locate a suitable flat location for the tank fitting. Ensure location is lower than the bottom of the sight gauge.
- Ensure there is sufficient room on the inside and outside of the tank for the fitting.
- Cut a $\varnothing 57$ mm hole using a hole saw
- Remove any sharp edges / swarf from the cut.



Clean swarf and other debris from edge and inside of tank tank as much as you can.

LQS C650 Main Tank Sight Gauge Installation Guide

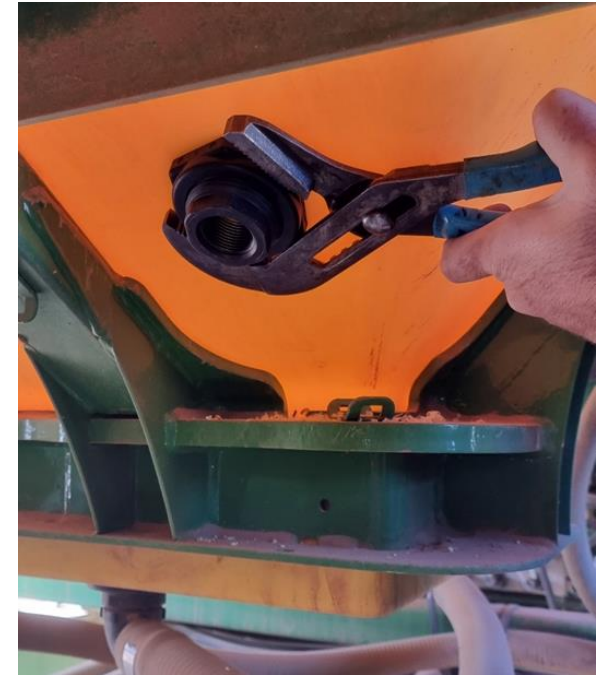
- Using a piece of rope and a weight, drop the rope down through the tank lid and out the hole cut for the tank fitting.



- Slide the tank fitting and gasket down the rope and through the hole in tank.



- Secure the tank fitting firmly with the locknut on the outside of the tank, ensuring the gasket is seated squarely against the inside.



LQS C650 Main Tank Sight Gauge Installation Guide

- Install the ball valve and barb fitting- using supplied Teflon tape on threads.



- Route the hose over the frame rail and fit to barb fitting on tank and sight gauge with supplied clamps.



LQS C650 Main Tank Sight Gauge Installation Guide

- Fill tank and check for leaks

